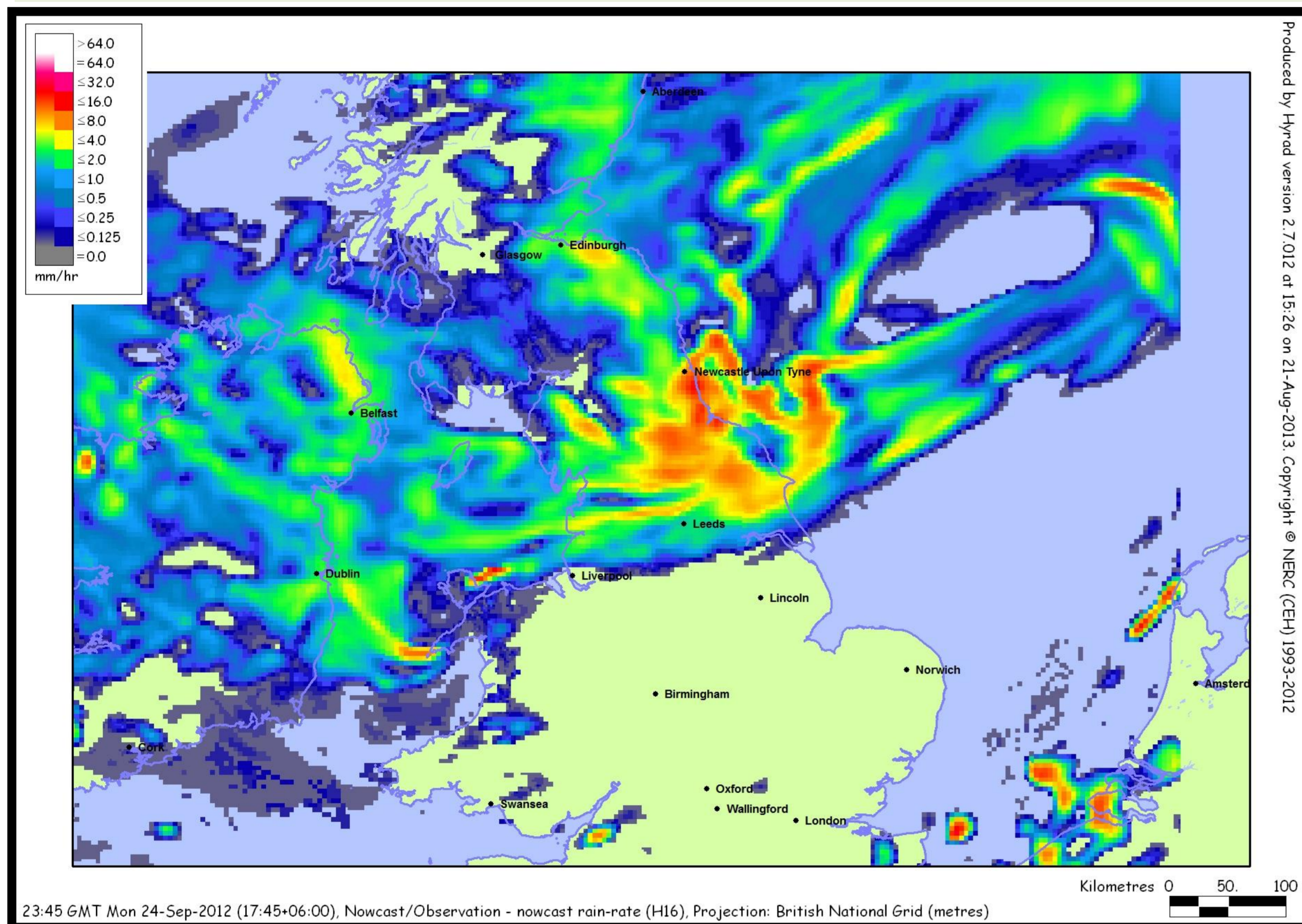


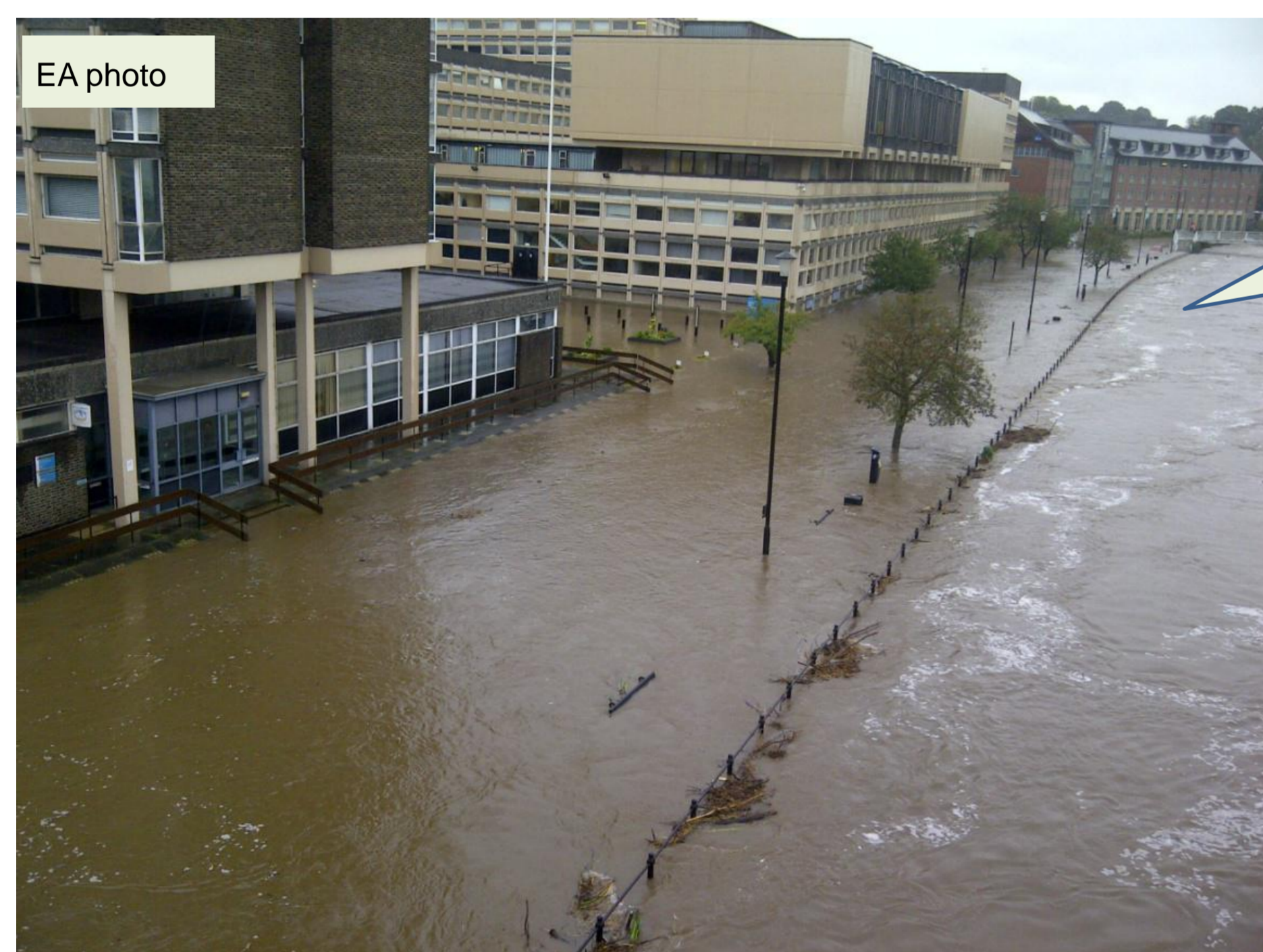


September 2012: Rain and Floods

Between 23 and 25 September 2012, parts of North East England had 4 inches (100mm) of rain.

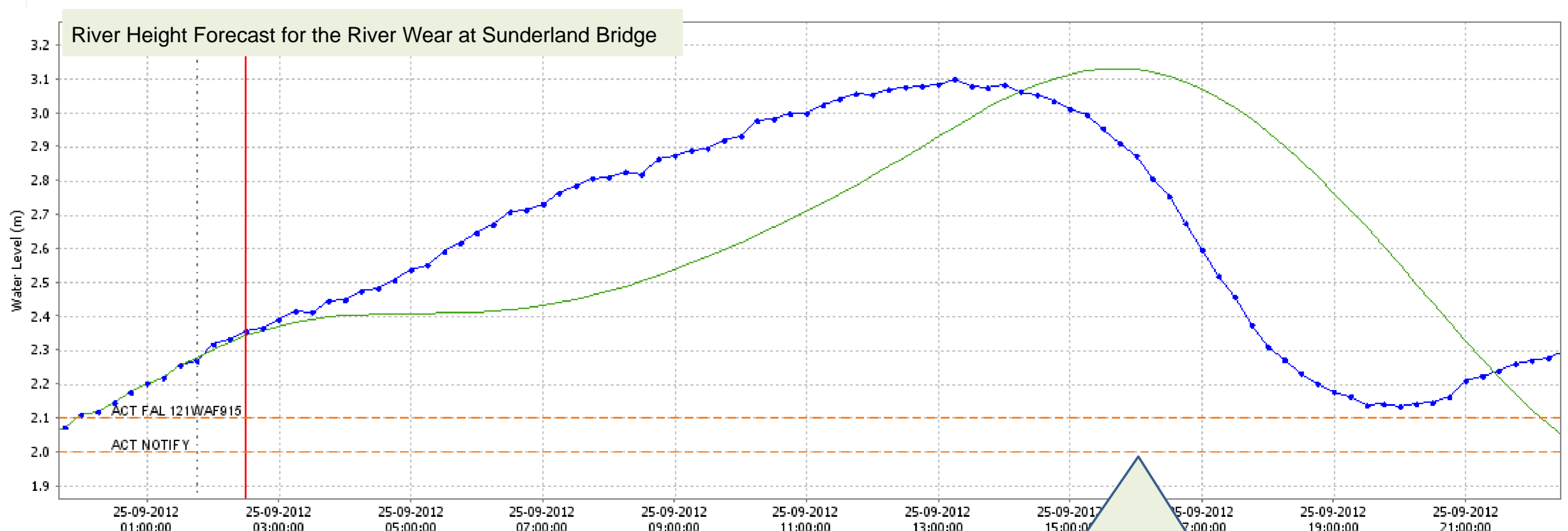


The A1 near Catterick was flooded



River Wear in Durham

Rivers across the region rose to high levels. The River Wear at Chester-le-Street reached 3.97m; the second highest level recorded.



Flood gates were closed in Rothbury

River height forecasts (the green line) predicted how high the River Wear would rise. The actual level is the blue line.